



OFFERS OVER

£190,000

Lethame Road
Strathaven, ML10 6AD

PROPERTY SUMMARY

Located within the sought-after address of Lethame Road opposite the beautiful Strathaven Park is this deceptively spacious, three-bedroom, terraced, family home requiring some degree of modernisation. The property has substantial accommodation over two levels, additional attic space, generous and mature private garden, garage, parking, and convenient position close to excellent local amenities, schooling, cafes, bars, and restaurants it offers a discerning purchaser the opportunity to acquire a centrally located Strathaven home they can add value to.

The bright and spacious accommodation comprises; welcoming reception hallway with cloakroom, front facing lounge with feature fireplace and electric fire inset, fitted dining size kitchen, and dining room with access to the mature garden and patio area.

Accessed via a turned staircase is a light and airy landing from where three, well-proportioned, double bedrooms can be found. Two of the three bedrooms benefit from fitted wardrobes. The first floor is completed by a large, four-piece, family bathroom, and access to the considerable attic space; this area could offer great potential to develop further with the necessary planning consents.

3



1



2





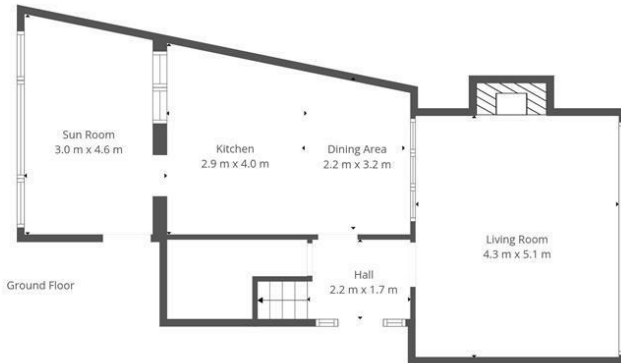






1st Floor

2nd Floor



Ground Floor

This Floorplan Is Intended To Give An Indication Of The Layout Only.



OFFICE ADDRESS
 9 Townhead Street
 Strathaven
 ML10 6AB

OFFICE DETAILS
 01357 510088
 judithmcgill@cruive-
 estateagents.co.uk

LOCAL AUTHORITY

South Lanarkshire

TENURE

Freehold

COUNCIL TAX BAND

D

VIEWINGS

By prior appointment only

Energy Efficiency Rating		Current	Potential
<i>Very energy efficient - lower running costs</i>			
(82 plus) A			
(81-91) B			
(69-80) C		73	80
(55-68) D			
(39-54) E			
(21-38) F			
(1-20) G			
<i>Not energy efficient - higher running costs</i>			
Scotland		EU Directive 2002/91/EC	

Agents Note: Whilst every care has been taken to prepare these particulars, they are for guidance purposes only. All measurements are approximate and are for general guidance purposes only and whilst every care has been taken to ensure their accuracy, they should not be relied upon and potential buyers/tenants are advised to recheck the measurements